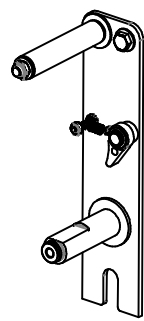


EXP-77

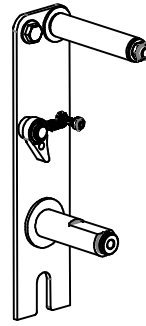
REVISION: -
ECO NO.: -
BY: G. REEDER
DATE: 1/05/06

COXREELS

SERIES S 13

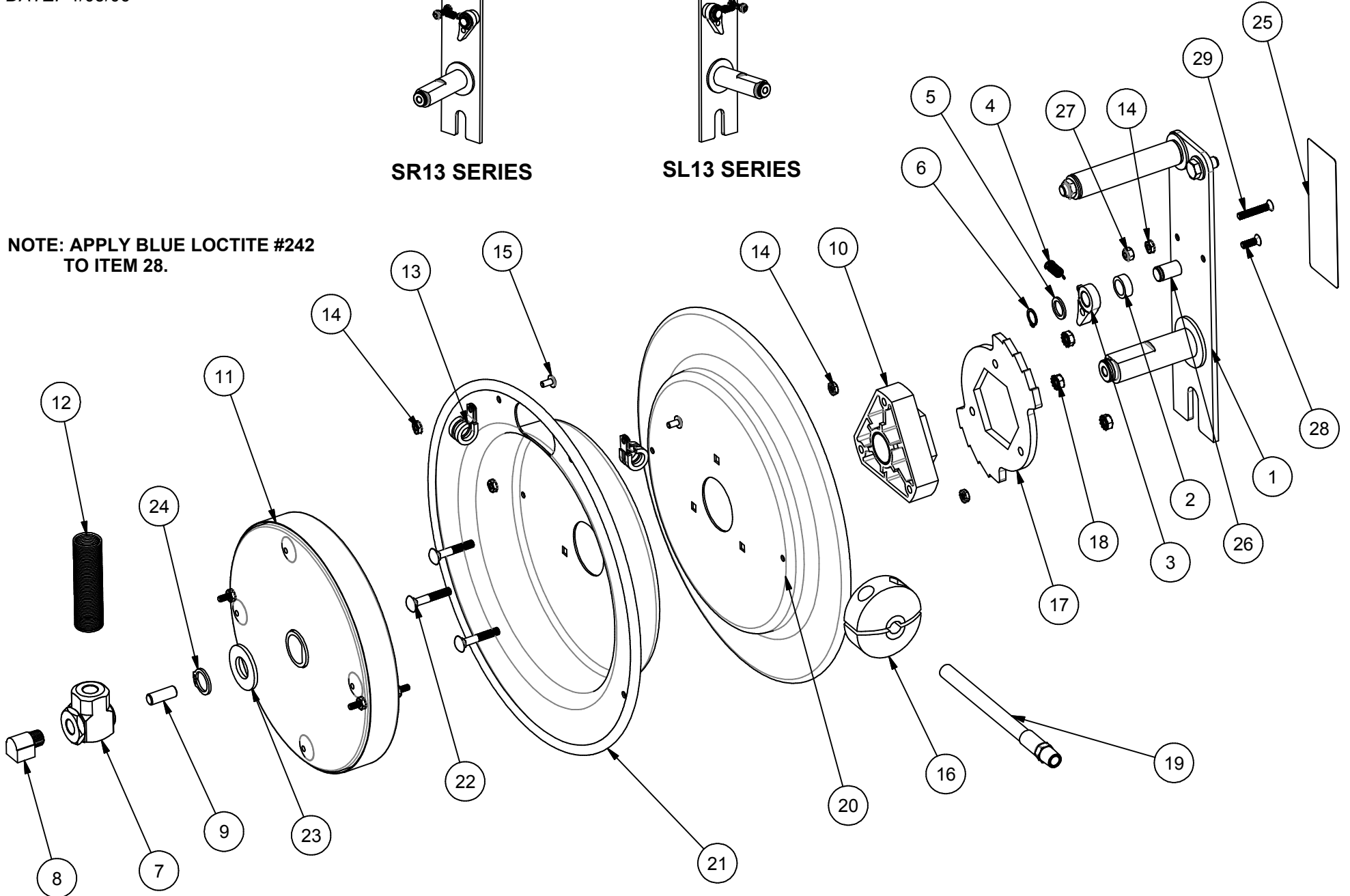


SR13 SERIES



SL13 SERIES

NOTE: APPLY BLUE LOCTITE #242
TO ITEM 28.



S 13" MODELS

| DETAIL ITEM NO. | PART NO. | DESCRIPTION | SL13-L125 | SR13-L125 | SL13L-L125 | SR13L-L125 |
|--------------------|----------|------------------------------------|-----------|-----------|------------|------------|
| 1 | 8539-R | ASSEMBLY, 13" SIDE MOUNT BRACKET | - | 1 | - | 1 |
| | 8539-L | ASSEMBLY, 13" SIDE MOUNT BRACKET | 1 | - | 1 | - |
| 2 | 6440-SS | SPACER, SS | 1 | 1 | 1 | 1 |
| 3 | 640-1-SS | CAM, LOCKING | 1 | 1 | 1 | 1 |
| 4 | 274-1-SS | SPRING | 1 | 1 | 1 | 1 |
| 5 | 6441-1 | WASHER, SPACER | 1 | 1 | 1 | 1 |
| 6 | 6326 | RING, RETAINING | 1 | 1 | 1 | 1 |
| 7 | 1969 | SWIVEL, 1/4" | 1 | 1 | 1 | 1 |
| 8 | 6088 | ELBOW, 90 DEG., 1/4" | 1 | 1 | 1 | 1 |
| 9 | 10235-SS | STUD, 3/8-16 X 1" SS | 1 | 1 | 1 | 1 |
| 10 | 1776-3 | ASSY., BEARING HUB | 1 | 1 | 1 | 1 |
| 11 | 1959-3 | ASSY., SPRING CAN, 8" | - | 1 | - | 1 |
| | 1959-3R | ASSY., SPRING CAN, 8" REVERSE | 1 | - | 1 | - |
| 12 | 237-1 | GUARD, HOSE, 1/4" - 3/8" | 1 | 1 | - | - |
| 13 | 2169 | CLAMP, #8 | 2 | 2 | 2 | 2 |
| 14 | 130 | NUT, #10-32 KEPS | 5 | 5 | 5 | 5 |
| 15 | 245 | SCREW, #10-32 X 3/8" | 2 | 2 | 2 | 2 |
| 16 | 131 | BALL STOP, 1/4" | 1 | 1 | - | - |
| 17 | 1924 | LOCKING RING | 1 | 1 | 1 | 1 |
| 18 | 125 | NUT, 1/4-20 KEPS | 3 | 3 | 3 | 3 |
| 19 | 5150-25 | HOSE ASSEMBLY, 1/4" X 25', 300 PSI | 1 | 1 | - | - |
| 20 | 140-1 | DISK, 13" X 1" | 1 | 1 | 1 | 1 |
| 21 | 139-1 | DISK, 13" X 2", W/ SLOT | 1 | 1 | 1 | 1 |
| 22 | 1953 | BOLT: 1/4-20 X 1-1/2" CARRIAGE | 3 | 3 | 3 | 3 |
| 23 | 1755-1 | WASHER, SPACER | 1 | 1 | 1 | 1 |
| 24 | 1753 | RING, RETAINING | 1 | 1 | 1 | 1 |
| 25 | 10925-5 | LABEL, ID, BLUE | 1 | 1 | 1 | 1 |
| 26 | 8423 | PIN, LOCKING CAM | 1 | 1 | 1 | 1 |
| 27 | 7050 | NUT, #10-32 NYLOCK | 1 | 1 | 1 | 1 |
| 28 | 8427 | SCREW, #10-32 X 5/8" FLAT HEAD | 1 | 1 | 1 | 1 |
| 29 | 8428 | SCREW, #10-32 X 1-1/4" FLAT HEAD | 1 | 1 | 1 | 1 |

NOTE 1: FOR MODELS WITH **-SB (STEEL BRAID HOSE) OPTION**. USE #5210-25 (ITEM 19) AND 115 (ITEM 13).

NOTE 2: FOR MODELS WITH **-BXC (CONSTANT TENSION) OPTION**. OMIT ITEMS #2, 3, 4, 5, 6, 14 (QTY 1), 17, 26, 27, 28, 29.
USE #170-1-125 BOLTS IN PLACE OF ITEM #22.

REVISION: -

ECO: -

DATE: 01/05/06

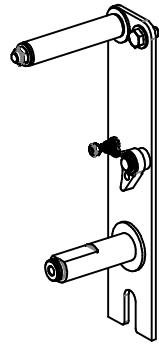
NAME: G. REEDER

EXP-78

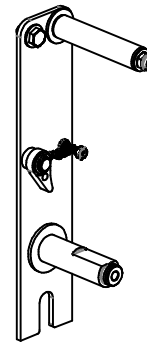
REVISION: -
ECO NO.: -
BY: G. REEDER
DATE: 1/05/06

COXREELS

SERIES S 15

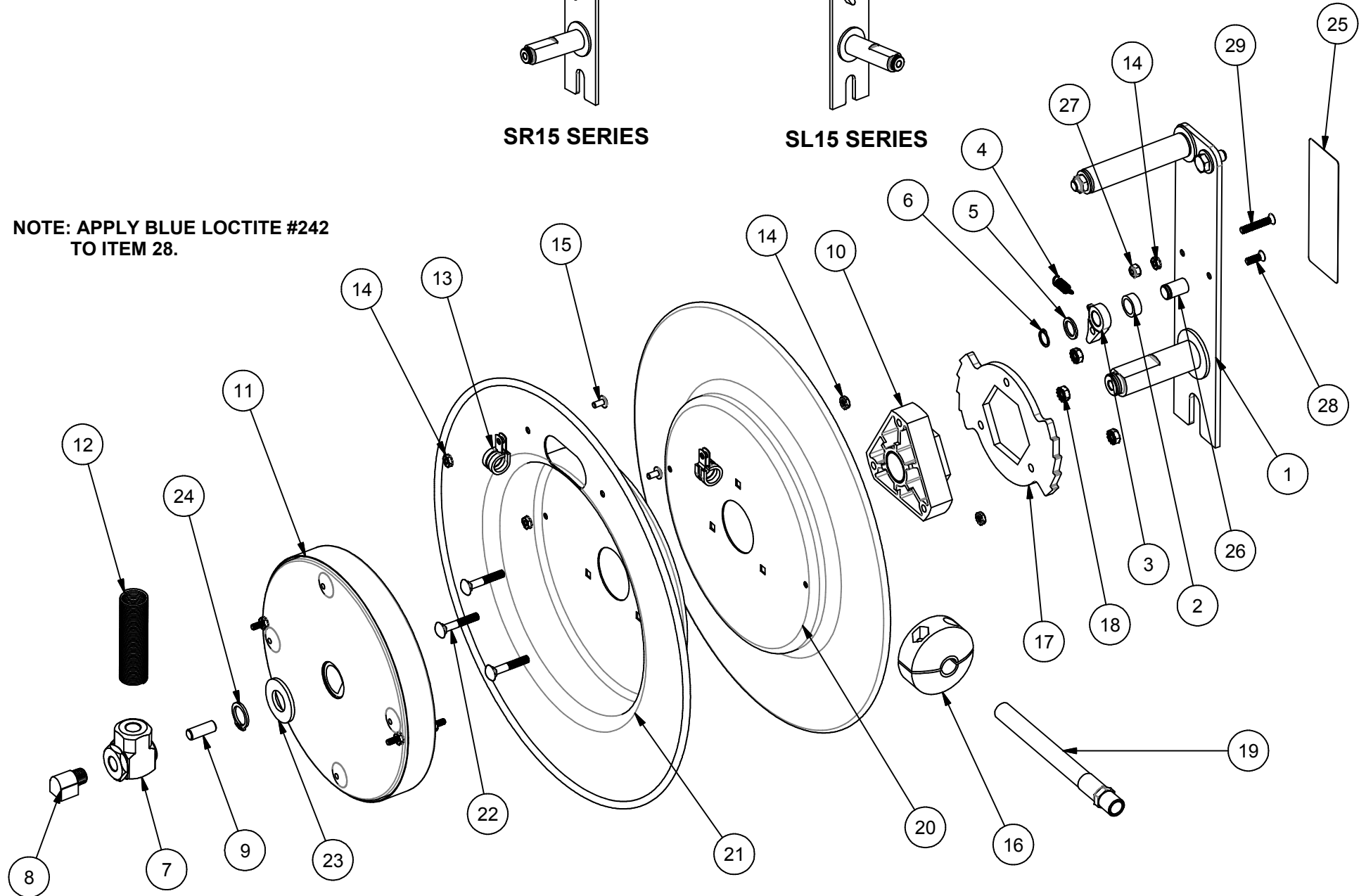


SR15 SERIES



SL15 SERIES

NOTE: APPLY BLUE LOCTITE #242
TO ITEM 28.



S 15" MODELS

| DETAIL ITEM NO. | PART NO. | DESCRIPTION | SL15-L135 | SR15-L135 | SL15-L325 | SR15-L325 | SL15L-L135 | SR15L-L135 | SL15L-L325 | SR15L-L325 |
|--------------------|----------|----------------------------------|-----------|-----------|-----------|-----------|------------|------------|------------|------------|
| 1 | 8540-R | ASSEMBLY, 15" SIDE MOUNT BRACKET | - | 1 | - | 1 | - | 1 | - | 1 |
| | 8540-L | ASSEMBLY, 15" SIDE MOUNT BRACKET | 1 | - | 1 | - | 1 | - | 1 | - |
| 2 | 6440-SS | SPACER, SS | 1 | 1 | 1 | 1 | 1 | 1 | 1 | 1 |
| 3 | 640-1-SS | CAM, LOCKING | 1 | 1 | 1 | 1 | 1 | 1 | 1 | 1 |
| 4 | 274-1-SS | SPRING | 1 | 1 | 1 | 1 | 1 | 1 | 1 | 1 |
| 5 | 6441-1 | WASHER, SPACER | 1 | 1 | 1 | 1 | 1 | 1 | 1 | 1 |
| 6 | 6326 | RING, RETAINING | 1 | 1 | 1 | 1 | 1 | 1 | 1 | 1 |
| 7 | 1935 | SWIVEL, 3/8" | - | - | 1 | 1 | - | - | 1 | 1 |
| | 1969 | SWIVEL, 1/4" | 1 | 1 | - | - | 1 | 1 | - | - |
| 8 | 6088 | ELBOW, 90 DEG. 1/4" | 1 | 1 | - | - | 1 | 1 | - | - |
| 9 | 10235-SS | STUD, 3/8-16 X 1" SS | 1 | 1 | 1 | 1 | 1 | 1 | 1 | 1 |
| 10 | 1776-3 | ASSY., BEARING HUB | 1 | 1 | 1 | 1 | 1 | 1 | 1 | 1 |
| 11 | 1958-2 | ASSY., SPRING CAN, 8" | - | 1 | - | - | - | 1 | - | - |
| | 1958-2R | ASSY., SPRING CAN, 8" REVERSE | 1 | - | - | - | 1 | - | - | - |
| | 1958-3 | ASSY., SPRING CAN, 8" | - | - | - | 1 | - | - | - | 1 |
| | 1958-3R | ASSY., SPRING CAN, 8" REVERSE | - | - | 1 | - | - | - | 1 | - |
| 12 | 237-1 | GUARD, HOSE, 1/4" - 3/8" | 1 | 1 | 1 | 1 | - | - | - | - |
| 13 | 381 | CLAMP, #10 | - | - | 2 | 2 | - | - | 2 | 2 |
| | 2169 | CLAMP, #8 | 2 | 2 | - | - | 2 | 2 | - | - |
| 14 | 130 | NUT, #10-32 KEPS | 5 | 5 | 5 | 5 | 5 | 5 | 5 | 5 |
| 15 | 245 | SCREW, #10-32 X 3/8" | 2 | 2 | 2 | 2 | 2 | 2 | 2 | 2 |
| 16 | 131-3 | BALL STOP, 3/8" | - | - | 1 | 1 | - | - | - | - |
| | 131 | BALL STOP, 1/4" | 1 | 1 | - | - | - | - | - | - |
| 17 | 1924 | LOCKING RING | 1 | 1 | 1 | 1 | 1 | 1 | 1 | 1 |
| 18 | 125 | NUT, 1/4-20 KEPS | 3 | 3 | 3 | 3 | 3 | 3 | 3 | 3 |
| 19 | 5153-25 | HOSE ASSEMBLY, 3/8" X 25' | - | - | 1 | 1 | - | - | - | - |
| | 5150-35 | HOSE ASSEMBLY, 1/4" X 35' | 1 | 1 | - | - | - | - | - | - |
| 20 | 189-1 | DISK, 15" X 1" | 1 | 1 | 1 | 1 | 1 | 1 | 1 | 1 |
| 21 | 190-1 | DISK, 15" X 2" W/ SLOT | 1 | 1 | 1 | 1 | 1 | 1 | 1 | 1 |
| 22 | 1953 | BOLT: 1/4-20 X 1-1/2" CARRIAGE | 3 | 3 | 3 | 3 | 3 | 3 | 3 | 3 |
| 23 | 1755-1 | WASHER, SPACER | 1 | 1 | 1 | 1 | 1 | 1 | 1 | 1 |
| 24 | 1753 | RING, RETAINING | 1 | 1 | 1 | 1 | 1 | 1 | 1 | 1 |
| 25 | 10925-5 | LABEL, ID, BLUE | 1 | 1 | 1 | 1 | 1 | 1 | 1 | 1 |
| 26 | 8423 | PIN, LOCKING CAM | 1 | 1 | 1 | 1 | 1 | 1 | 1 | 1 |
| 27 | 7050 | NUT, #10-32 NYLOCK | 1 | 1 | 1 | 1 | 1 | 1 | 1 | 1 |
| 28 | 8427 | SCREW, #10-32 X 5/8" FLAT HEAD | 1 | 1 | 1 | 1 | 1 | 1 | 1 | 1 |
| 29 | 8428 | SCREW, #10-32 X 1-1/4" FLAT HEAD | 1 | 1 | 1 | 1 | 1 | 1 | 1 | 1 |

NOTE 1: FOR MODELS WITH **-SB (STEEL BRAID HOSE) OPTION**. USE #5210-35 (ITEM 19) AND 115 (ITEM 115).

NOTE 2: FOR MODELS WITH **-BXC (CONSTANT TENSION) OPTION**. OMIT ITEMS #2, 3, 4, 5, 6, 14 (QTY 1), 17, 26, 27, 28, 29.
USE #170-1-125 BOLTS IN PLACE OF ITEM #22.

REVISION: -

ECO: -

DATE: 01/05/06

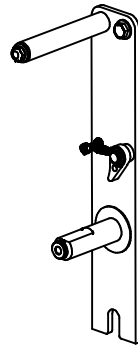
NAME: G. REEDER

EXP-76

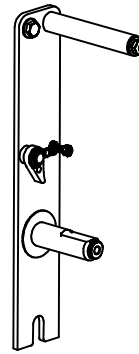
REVISION: A
ECO NO.: 2309
DRAWN BY: G. REEDER
DATE: 6/19/06

COXREELS SERIES S 17"

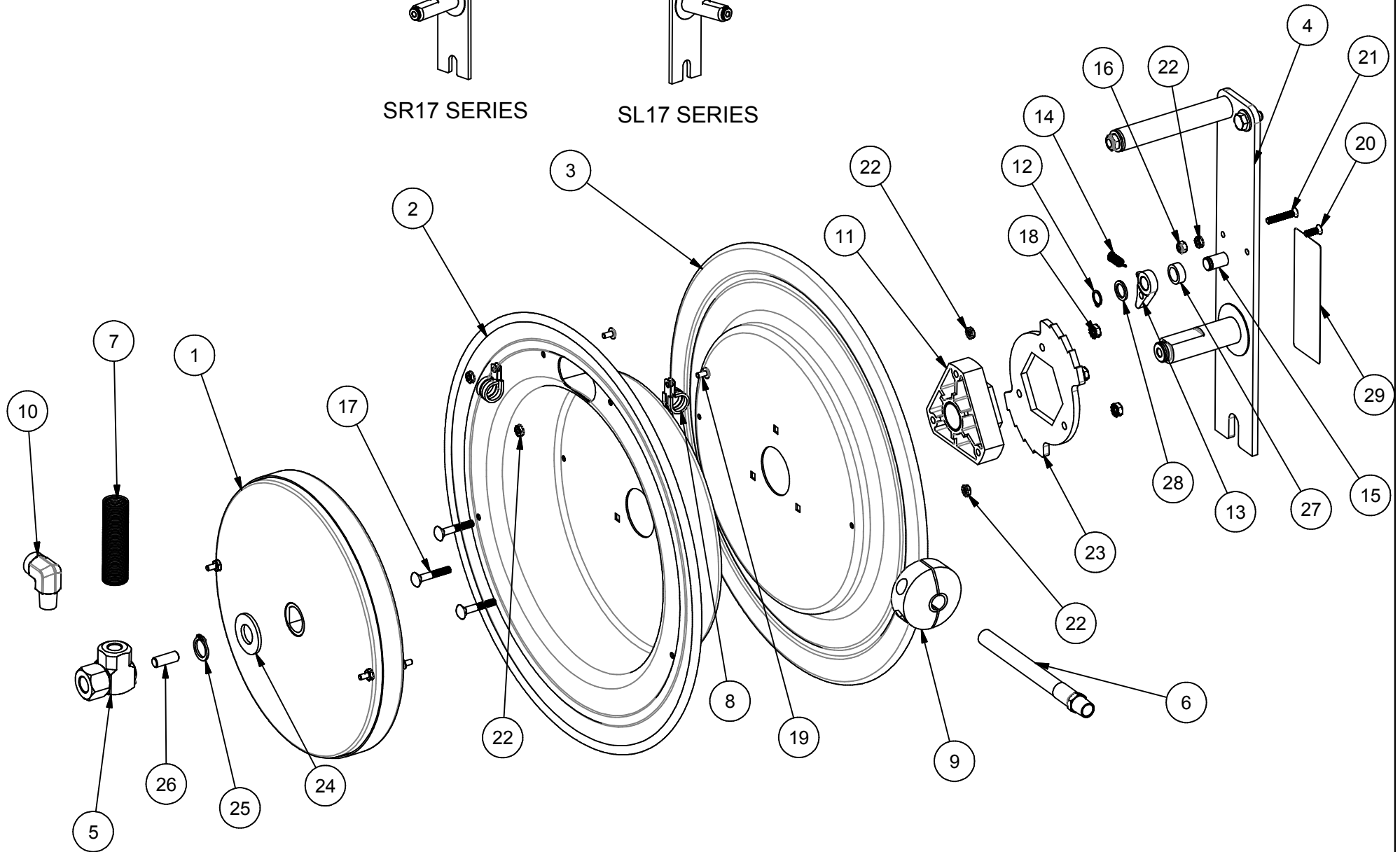
NOTE: APPLY BLUE LOCTITE #242
TO ITEM 20.



SR17 SERIES



SL17 SERIES



| ITEM NO. | PART NO. | DESCRIPTION | QTY. |
|----------|----------|----------------------------------|------|
| 11 | 1776-3 | ASSY., HUB BEARING | 1 |
| 12 | 6326 | RING, RETAINING | 1 |
| 13 | 640-1-SS | CAM, LOCKING | 1 |
| 14 | 274-1-SS | SPRING, DOG | 1 |
| 15 | 8423 | PIN, LOCKING CAM | 1 |
| 16 | 7050 | NUT, #10-32 NYLOCK | 1 |
| 17 | 1953 | CARRIAGE BOLT, 1/4-20 x 1.5 | 3 |
| 18 | 125 | NUT, KEPS, 1/4-20 | 3 |
| 19 | 245 | SCREW, TRUSS HD. 10-32x3/8" | 2 |
| 20 | 8427 | SCREW, #10-32 X 5/8" FLAT HEAD | 1 |
| 21 | 8428 | SCREW, #10-32 X 1-1/4" FLAT HEAD | 1 |
| 22 | 130 | NUT, #10-32 KEPS | 5 |

| ITEM NO. | PART NO. | DESCRIPTION | QTY. |
|----------|----------|----------------------|------|
| 23 | 1924 | RING, LOCKING | 1 |
| 24 | 1755-1 | WASHER, SPACER HDPE | 1 |
| 25 | 1753 | RING, RETAINING | 1 |
| 26 | 10235-SS | STUD, 3/8-16 X 1" SS | 1 |
| 27 | 6440-SS | SPACER, SS | 1 |
| 28 | 6441-1 | WASHER, SPACER HDPE | 1 |
| 29 | 10925-5 | LABEL, STD ID | 1 |

ITEM NUMBER

| MODEL | 1 | 2 | 3 | 4 | 5 | * 6 | * 6 | * 6 | * 7 | 8 | * 9 | 10 |
|-----------|---------|------|------|--------|--------|------------|------------|------------|----------|-----------|-----------|-------|
| | SPRING | DISK | DISK | BASE | SWIVEL | HOSE (STD) | HOSE (-OG) | HOSE (-RH) | HOSE GRD | CLAMP (2) | BALL STOP | ELBOW |
| SR17-L350 | 1961-7 | 1948 | 1947 | 8417-R | 1935 | 5153-50 | 5101-50 | 5045-50 | 237-1 | 381 | 131-3 | - |
| SL17-L350 | 1961-7R | 1948 | 1947 | 8417-L | 1935 | 5153-50 | 5101-50 | 5045-50 | 237-1 | 381 | 131-3 | - |
| SR17-L430 | 1961-5 | 1948 | 1947 | 8417-R | 439 | 5154-30 | 5131-30 | 5066-30 | 398-1 | 383 | 131-4 | - |
| SL17-L430 | 1961-5R | 1948 | 1947 | 8417-L | 439 | 5154-30 | 5131-30 | 5066-30 | 398-1 | 383 | 131-4 | - |

ITEM NUMBER

| MODEL | 1 | 2 | 3 | 4 | 5 | * 6 | * 7 | 8 | * 9 | 10 |
|-----------|---------|------|------|--------|--------|------------|----------|-----------|-----------|-------|
| | SPRING | DISK | DISK | BASE | SWIVEL | HOSE (STD) | HOSE GRD | CLAMP (2) | BALL STOP | ELBOW |
| SR17-M325 | 2037-3 | 1948 | 1947 | 8417-R | 1935 | 5224-25 | 237-1 | 381 | 131-3 | 500 |
| SL17-M325 | 2037-3R | 1948 | 1947 | 8417-L | 1935 | 5224-25 | 237-1 | 381 | 131-3 | 500 |
| SR17-M425 | 2037-3 | 1948 | 1947 | 8417-R | 434 | 5256-25 | 398-1 | 383 | 131-4 | 1671 |
| SL17-M425 | 2037-3R | 1948 | 1947 | 8417-L | 434 | 5256-25 | 398-1 | 383 | 131-4 | 1671 |

ITEM NUMBER

| MODEL | 1 | 2 | 3 | 4 | 5 | * 6 | * 7 | 8 | * 9 | 10 |
|-----------|---------|------|------|--------|--------|------------|----------|-----------|-----------|-------|
| | SPRING | DISK | DISK | BASE | SWIVEL | HOSE (STD) | HOSE GRD | CLAMP (2) | BALL STOP | ELBOW |
| SR17-H125 | 2037-3 | 1948 | 1947 | 8417-R | 499 | 5304-25 | 237-1 | 115 | 131 | 616 |
| SL17-H125 | 2037-3R | 1948 | 1947 | 8417-L | 499 | 5304-25 | 237-1 | 115 | 131 | 616 |
| SR17-H325 | 2037-3 | 1948 | 1947 | 8417-R | 521 | 5336-25 | 237-1 | 613 | 131-3 | 617 |
| SL17-H325 | 2037-3R | 1948 | 1947 | 8417-L | 521 | 5336-25 | 237-1 | 613 | 131-3 | 617 |

* ON "LESS HOSE" MODELS (SR17L-, SL17L-) EXCLUDE ITEMS #6,#7, AND #9.

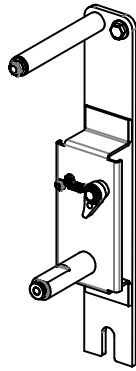
NOTE: MODELS SUPPLIED WITH "STANDARD" HOSE UNLESS SUFFIXED WITH "-OG" OR "-RH". USE HOSE NUMBERS AS NOTED ABOVE.

REEL ASSEMBLY REPORTS R100 (LATCHOUT REMOVAL), R101 (LOCKING RING PLACEMENT), R112 (TIGHTENING AND TORQUING)

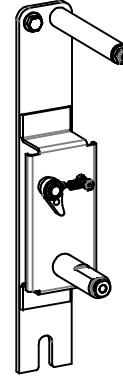
EXP-79

REVISION: -
ECO NO.: -
BY: G. REEDER
DATE: 8/4/06

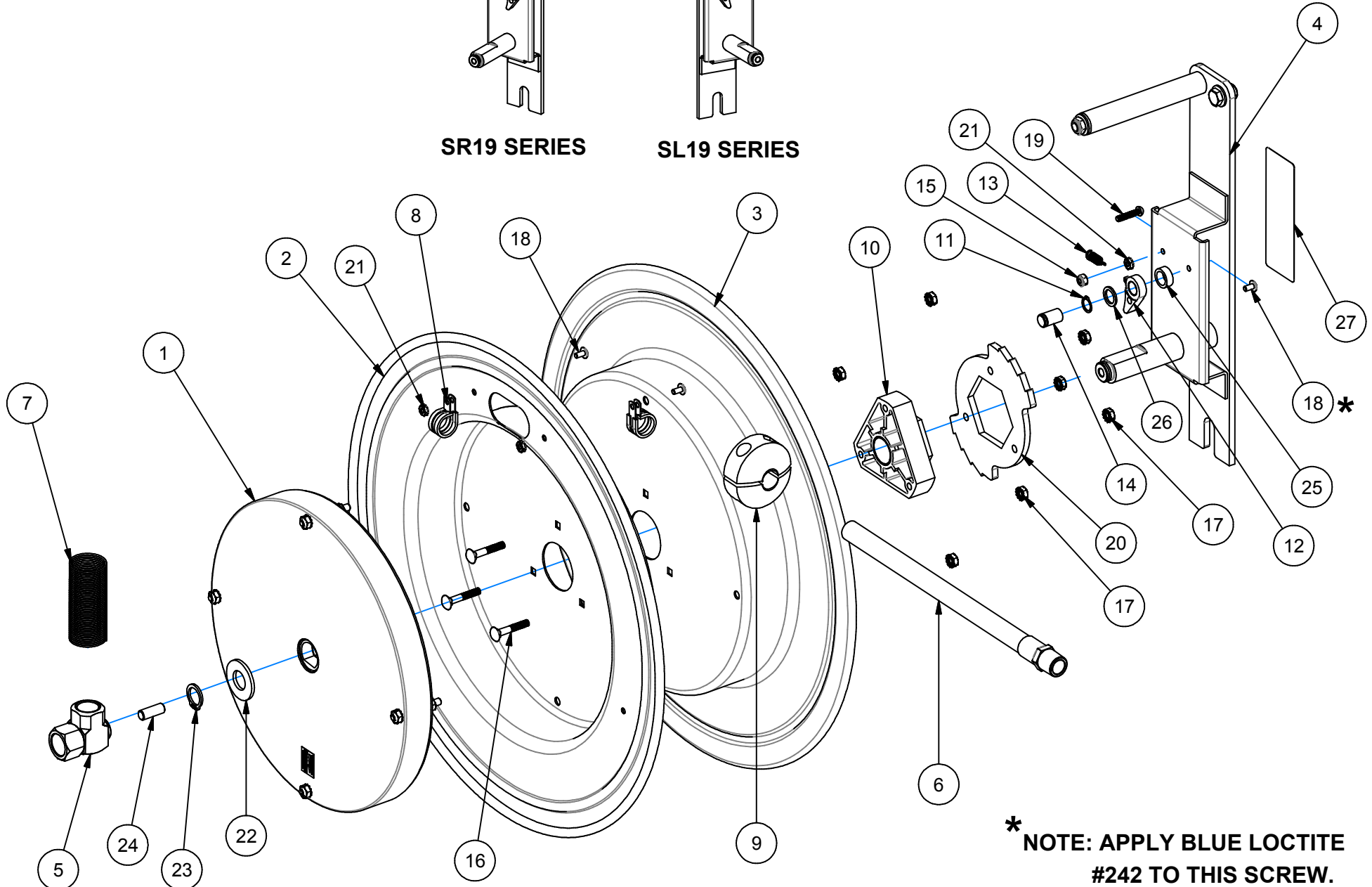
COXREELS SERIES S19"



SR19 SERIES



SL19 SERIES



* NOTE: APPLY BLUE LOCTITE
#242 TO THIS SCREW.

| ITEM NO. | PART NO. | DESCRIPTION | QTY. |
|----------|----------|-------------------------------|------|
| 10 | 1776-3 | ASSY., HUB BEARING | 1 |
| 11 | 6326 | RING, RETAINING | 1 |
| 12 | 640-1-SS | CAM, LOCKING | 1 |
| 13 | 274-1-SS | SPRING, DOG | 1 |
| 14 | 8423 | PIN, LOCKING CAM | 1 |
| 15 | 7050 | NUT, #10-32 NYLOCK | 1 |
| 16 | 1953 | CARRIAGE BOLT, 1/4-20 x 1.5 | 3 |
| 17 | 125 | NUT, KEPS, 1/4-20 | 7 |
| 18 | 245 | SCREW, TRUSS HD. 10-32x3/8" | 3 |
| 19 | 8485 | SCREW, #10-32 X 1" ROUND HEAD | 1 |
| 20 | 1924 | RING, LOCKING | 1 |
| 21 | 130 | NUT, #10-32 KEPS | 3 |

| ITEM NO. | PART NO. | DESCRIPTION | QTY. |
|----------|----------|----------------------|------|
| 22 | 1755-1 | WASHER, SPACER HDPE | 1 |
| 23 | 1753 | RING, RETAINING | 1 |
| 24 | 10235-SS | STUD, 3/8-16 X 1" SS | 1 |
| 25 | 6440-SS | SPACER, SS | 1 |
| 26 | 6441-1 | WASHER, SPACER HDPE | 1 |
| 27 | 10925-5 | LABEL, STD ID | 1 |

ITEM NUMBER

| LOW PRESSURE | MODEL | 1 | 2 | 3 | 4 | 5 | * 6 | | | * 7 | 8 | * 9 |
|--------------|-----------|--------|------|------|--------|--------|------------|------------|------------|----------|-----------|-----------|
| | | SPRING | DISK | DISK | BASE | SWIVEL | HOSE (STD) | HOSE (-OG) | HOSE (-RH) | HOSE GRD | CLAMP (2) | BALL STOP |
| | SR19-L450 | 691-3 | 1703 | 1702 | 8616-R | 439 | 5154-50 | 5131-50 | 5066-50 | 398-1 | 383 | 131-4 |
| | SL19-L450 | 691-3R | 1703 | 1702 | 8616-L | 439 | 5154-50 | 5131-50 | 5066-50 | 398-1 | 383 | 131-4 |

ITEM NUMBER

| MEDIUM PRESSURE | MODEL | 1 | 2 | 3 | 4 | 5 | * 6 | * 7 | | | 8 | * 9 |
|-----------------|-----------|--------|------|------|--------|--------|------------|----------|-----------|-----------|---|-----|
| | | SPRING | DISK | DISK | BASE | SWIVEL | HOSE (STD) | HOSE GRD | CLAMP (2) | BALL STOP | | |
| | SR19-M350 | 646 | 1703 | 1702 | 8616-R | 1935 | 5224-50 | 237-1 | 381 | 131-3 | | |
| | SL19-M350 | 646R | 1703 | 1702 | 8616-L | 1935 | 5224-50 | 237-1 | 381 | 131-3 | | |
| | SR19-M450 | 696-1 | 1703 | 1702 | 8618-R | 439 | 5256-50 | 398-1 | 383 | 131-4 | | |
| | SL19-M450 | 696-1R | 1703 | 1702 | 8618-L | 439 | 5256-50 | 398-1 | 383 | 131-4 | | |

ITEM NUMBER

| HIGH PRESSURE | MODEL | 1 | 2 | 3 | 4 | 5 | * 6 | * 7 | | | 8 | * 9 |
|---------------|-----------|--------|------|------|--------|--------|------------|----------|-----------|-----------|---|-----|
| | | SPRING | DISK | DISK | BASE | SWIVEL | HOSE (STD) | HOSE GRD | CLAMP (2) | BALL STOP | | |
| | SR19-H150 | 646 | 1703 | 1702 | 8616-R | 499 | 5304-50 | 237-1 | 115 | 131 | | |
| | SL19-H150 | 646R | 1703 | 1702 | 8616-L | 499 | 5304-50 | 237-1 | 115 | 131 | | |
| | SR19-H350 | 696-1 | 1703 | 1702 | 8618-R | 521 | 5336-50 | 237-1 | 613 | 131-3 | | |
| | SL19-H350 | 696-1R | 1703 | 1702 | 8618-L | 521 | 5336-50 | 237-1 | 613 | 131-3 | | |

* ON "LESS HOSE" MODELS (SR19L-, SL19L-) EXCLUDE ITEMS #6,#7, AND #9.

REEL ASSEMBLY REPORTS R100 (LATCHOUT REMOVAL), R101 (LOCKING RING PLACEMENT), R112 (TIGHTENING AND TORQUING)

REVISION: -

ECO: -

DATE: 8/3/2006

NAME: G. REEDER